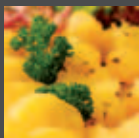
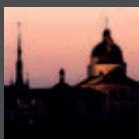
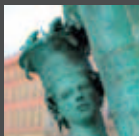


OLOMOUC



pocket guidebook ■

OLOMOUC

- the most beautiful city in the Czech Republic according to Lonely Planet
- 100,000 inhabitants, the sixth largest city in the Czech Republic, largest urban conservation area after Prague
- the centre of the fertile Haná region, administrative centre of the Olomouc region
- the seat of the 2nd oldest university in the country (founded 1573), the seat of archbishopric



Local transport provides a web of tram and bus lines. Buy your transfer ticket at automats (14 CZK) or from bus and tram drivers (20 CZK) and you can travel 40 minutes on working days, 60 minutes on weekends and holidays.

www.dpmo.cz

P

There is a pedestrian precinct in the centre. Parking is allowed in side streets after paying a parking charge in parking meter (20 CZK/hour), to park use the map with marked places.



Olomouc offers a great range of accommodation in all categories. The personnel of IC (Information Centre) can help with selection and reservations. See the details on:

tourism.olomouc.eu



OLOMOUC INFORMATION CENTRE

Upper Square – Town Hall

Opening hours: daily 9.00am – 7.00pm

Tel: +420 585 513 385, +420 585 513 392

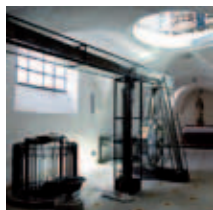
Fax: +420 585 220 843

infocentrum@olomouc.eu

www.facebook.com/informacni.centrum.olomouc

<http://tourism.olomouc.eu>

Our best...



tips for trips you can't miss

HOLY TRINITY COLUMN – THE UNESCO MONUMENT

Dominating the Upper Square, 32 m high, represents high Middle Europe Baroque sculpture. Together with plague column dedicated to the Virgin Mary placed in the Lower Square and six Baroque fountains, it makes up original set which gives a unique feature to the town centre, the second largest urban conservation area in the country.

OLOMOUC CASTLE – THE PLACE HISTORY WAS WRITTEN

You can't miss this sight built on Wenceslas mound. The last Přemyslid king Wenceslas III was murdered here in 1306. You can admire the Bishop's Palace with famous Romanesque windows, Gothic St Wenceslas Cathedral, the seat of Olomouc archbishop or the Archdiocesan Museum founded on Pope John Paul II initiative.

CHURCHES – THE FULL VIEW OF HISTORY

They say that Olomouc is one of the first towns in Europe in the number of churches per capita. Rarely can you find such a complete set of each architectural style as a whole. The Gothic St Moritz Church catches your eye as well as the Baroque Hradisko Monastery called the "Moravian Escorial". However it would be a mistake to miss the small hidden chapel of John Sarkander. Among other things, you can see the rack where Sarkander was tortured to death.

ASTRONOMICAL CLOCK – A RARITY OF SOCIAL REALISM

Originally a Gothic clock that gained its current unique look by renovation in the post-war socialist period. Every midday the figurines of peasants and proletarians start to move to the sounds of the chimes. The astronomical clock is placed on the side of the Renaissance Town Hall with tower (75 m high), which is open for tourists within tours organised by Information Centre Olomouc.

TVARŮŽKY – GOURMET EXPERIENCE

This distinguished low-fat smelly-cheese inseparable from Olomouc is only made in nearby Loštice where you can visit the specialised museum. The unique characteristics are a typical strong smell and delicious taste. Whether you taste it with just a piece of bread or a necessary glass of beer, or in a cooked variant in an Olomouc restaurant, it will give you an unforgettable gourmet experience. On sale in a special ticket machine at Information Centre Olomouc.

FLORA OLOMOUC – BLOOMING TOWN

Olomouc is visited traditionally three times a year by thousands of people to see the charm of the flower show. Besides these exhibitions you can admire the greenery of parks kept since the 19th century outside the former city walls. Owing to this, the parks surround the centre today and offer a unique opportunity to view the fortifications and some dominant features of the town.

Most Important Monuments

■ HOLY TRINITY COLUMN

Unique Baroque sculptural group from the mid-18th century, 32 m high, was added to the World Heritage List of UNESCO in 2000. There is a chapel open to the public in season in its lower part. | [Photo 1](#)



1

■ TOWN HALL AND HOROLOGE

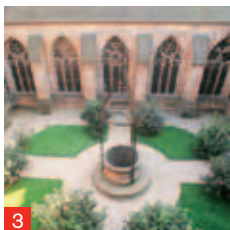
This Renaissance town hall, formerly Gothic, has a unique astronomical clock (performance daily at noon), the publicly opened tower and Gothic chapel of St Jeronym. | [Photo 2](#)



2

■ ROMAN BISHOP'S PALACE

Outstanding Romanesque windows belong to the debris of Zdik Palace, founded in the 11th century with the Olomouc bishopric. Today it's a part of the Archdiocesan Museum. | [Photo 3](#)



3

■ ST WENCESLAS CATHEDRAL

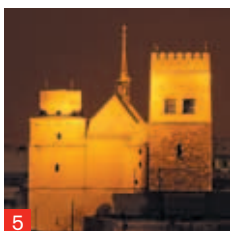
An imposing Gothic church with monumental Neo-Gothic tower, is the 2nd highest in the country. The seat church of the archbishop with an impressive interior and vault is open to the public. | [Photo 4](#)



4

■ CHURCH OF ST MORITZ

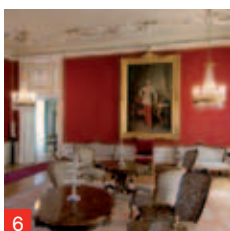
An important late Gothic site from the turn of the 14th and 15th century has the largest organ in Central Europe (1745) and open to public church tower. | [Photo 5](#)



5

■ ARCHBISHOP'S PALACE

Seat of Olomouc archdiocese and one of the most magnificent Baroque palace buildings, founded in the 17th century. Open to the public. | [Photo 6](#)



6

■ CHURCH OF ST MARY OF THE SNOW

The Church of St Mary of the Snow Baroque building of the former Jesuit church was finished in 1719, with a richly decorated facade and two dominant towers.

■ CHURCH OF ST MICHAEL

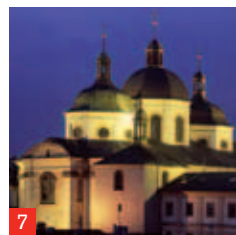
This richly decorated one-nave Baroque church with three copulas is impossible to overlook in Olomouc skyline. Tourists can admire the underground hermitage and Gothic bell tower. | [Photo 7](#)

■ CHAPEL OF ST JOHN SARKANDER

This Neo-Baroque monument replaced the old town prison in which St John Sarkander was tortured to death on the rack. | [Photo 8](#)

■ HRADISKO MONASTERY

First autonomous monastery in Moravia from the 11th century. The large Baroque premises, newly built after a fire in the 18th century by G. P. Tencalla, houses the oldest military hospital in the country. | [Photo 9](#)



7

■ GROUP OF BAROQUE FOUNTAINS

Six masterly-done fountains with mythological motifs grace the town centre from the turn of 17th and 18th centuries. | [Photo 10](#)



8

■ ARION FOUNTAIN

This breathtaking work of famous native Ivan Theimer from 2002 shows the originally planned motif of the 7th non-realised Baroque fountain. In summer children paddle in it, favourite relaxing place for tired tourists. | [Photo 11](#)



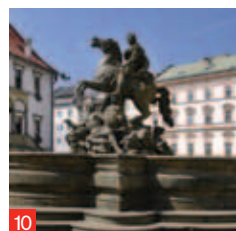
9

■ PILGRIMAGE CHURCH ON THE HOLY HILL

An imposing Baroque church elevated by Pope John Paul II to basilica minor, offers charming views of the town. | [Photo 12](#)

■ ST GORAZD CHURCH

An orthodox bishop's church in Byzantine style and characteristic onion-shaped golden-plated dome, finished in 1939.



10

■ OLD JESUIT MONASTERY

Perfectly rebuilt Baroque complex closely connected to the beginning of town's university. Today it's lively centre for students' art activities. You will be astonished by the views of the park and the Corpus Christi Chapel.



11

■ THERESIAN GATE

Carefully renovated monument named after Empress Maria Theresa is relic of the bastion fortress. It's the only well-preserved gate to the Baroque citadel.

■ THERESIAN ARMOURY

This stately Late Baroque building is an archetypal example of Theresian military architecture. Today it's a large quadrangle with a restaurant packed with students.



12

■ WATER BARRACKS

The lively centre of entertainment all day and night through are Mlynská and Uhelná Streets. The original walls of the former town fortification house several bars, restaurants and clubs: Restaurant Captain Morgan with disco club, dancing club Belmondo, Irish pub Crack with famous Nepalese cuisine, Rasputin bar, Czech restaurant Kamenný mlýn, Café Illy or traditional pub Vodní kasárna.

■ JAZZ TIBET CLUB

The pleasant club atmosphere of this restaurant makes it a popular place for frequent jazz concerts.

Sokolská 48, tel.: +420 585 230 399, www.jazzclub.olomouc.com

■ U-KLUB

Typical student's club with long tradition entertains regular concerts of popular Czech and foreign music stars.

Šmeralova 12, tel.: +420 585 230 399, www.u-klub.cz

■ VARNA

The "fixed star" among Olomouc night clubs offers, along with a well supplied bar, good entertainment not only for the young ones.

Riegrova 6, tel.: +420 585 522 122, www.varna.cz

■ MEEX CLUB

Popular club in the very centre, wide programme for the image-conscious.

Upper Square 19, tel.: +420 603 580 918, www.meex.cz

■ ARKTIC MUSIC CLUB

Wheelchair accessible and non-smoking multi-genre club with good quality drinks and good music. Open only to people 18 years of age and older.

Havlíčková 11, tel.: +420 775 660 518, www.arktic.cz

TIPS FROM EVENTS CALENDAR

January – May

Olomouc Jazz Days

March

Musica Religiosa

April

Academia Film Olomouc
Flora Olomouc – springtime
Olomouc Ecological Days

May

Flora Theatre Festival
Dvořák's Olomouc
Olomouc Beer Festival

June

Festival of Songs Olomouc
Olomouc's Half Marathon
City Festival

June – September

Summer of Culture in Olomouc

August

Flora Olomouc – summertime
Colores Flamencos Olomouc
Festival of Lights

September

Marshal Radetzky Celebration
European Heritage Days
International Organ Festival
Vzáří/Septembeam

September – October

Autumn Festival of Spiritual Music

October

Flora Olomouc – autumntime
Week of Improvisation

December

Festival of Animated Films (PAF)
Olomouc Christmas

More events at tourism.olomouc.eu

■ MORAVIAN RESTAURANT

An exclusive menu of national Czech and Moravian cuisine set in a period country interior.

Upper Square 23, tel.: +420 585 222 868
www.moravskarestaurace.cz

■ HANÁČKÁ PUB

A wide choice of traditional gastronomy and local specialities in an original non-smoking restaurant.

Lower Square 38, tel.: +420 585 237 186
www.hanackarestaurace.cz

■ MORITZ PUB AND BREWERY

A cosy non-smoking small brewery offers its own original brewed beer. Apart from tasting beer you are welcomed to a brewery excursion.

Nešverova 2, tel.: +420 585 205 560
www.hostinec-moritz.com

■ SVATOVÁCLAVSKÝ BREWERY

Stylish restaurant and beer spa under the same roof. Seven kinds of own yeasty beer and delicious home cooking.

Mariánská 4, tel.: 585 207 517
www.svatovaclavsky-pivovar.cz

■ DRÁPAL ORIGINAL RESTAURANT

Traditional restaurant menu of hearty cuisine is sought mainly by Pilzen beer lovers.

Havlíčková 1, tel.: +420 585 225 818
www.restauracedrapal.cz

■ POTREFENÁ HUSA

Stylish restaurant comes from the concept based on national cuisine, light dishes and, above all, brand-name beers.

Opletalova 1, tel.: +420 585 203 171
www.potrefenahusa.cz

■ ABASTA!

Traditional Czech recipes and world cuisine in the award-winning restaurant.

Divadelní 2, tel.: +420 725 389 083
www.abastaolomouc.cz

■ RESTAURANT VILLA PRIMAVESI

Discerning visitors will enjoy the view of Bezruč Park from the summer terrace of this restaurant placed in a famous Art-Nouveau villa.

Univerzitní 7, tel.: +420 585 204 852
www.primavesi.cz

■ TRADITIONAL CAFES

In the historic town centre you can relax with a cup of coffee in famous cafes, one of which is, for example, Opera Cafe with children's room, or renowned Mahler Café on the Upper Square.





Most Important Monuments

- 1 Holy Trinity Column
- 2 Town Hall and Horologe
- 3 Romanesque Bishop's Palace
- 4 St Wenceslas Cathedral
- 5 Church of St Moritz
- 6 Archbishop's Palace
- 7 Church of St Mary of the Snow
- 8 Church of St Michael
- 9 Chapel of St John Sarkander
- 10 Caesar's Fountain
- 11 Hercules' Fountain
- 12 Mercury's Fountain

13 Neptune's Fountain

- 14 Jupiter's Fountain
- 15 Tritons' Fountain
- 16 Arion's Fountain
- 17 St Gorazd Church
- 18 Old Jesuit Monastery
- 19 Theresian Gate
- 20 Theresian Armoury
- 21 Capuchin Church

Cultural Life

- 1 Moravian Theatre Olomouc
- 2 Moravian Philharmonic
- 3 Archdiocesan Museum

4 Museum of Modern Art

- 5 Regional Museum
- 6 Art Centre of Palacký University

Tips for Gourmets

- 1 Moravian Restaurant
- 2 Hanácká Pub
- 3 Moritz Pub and Brewery
- 4 Svatováclavský Brewery
- 5 Drápal originál restaurant
- 6 Potrefená husa
- 7 Abasta!
- 8 Restaurant Villa Primavesi
- 9 Opera Cafe and Mahler Café

Entertainment in Olomouc

- 1 Water Barracks
- 2 Jazz Tibet Club
- 3 U-klub
- 4 Varna
- 5 Meex Club
- 6 Arctic Music Club

Sports and Leisure

- 1 Flora Olomouc Exhibition Grounds
- 2 Indoor Swimming Pool
- 3 Sigma Football Stadium
- 4 Ice Stadium
- 5 Tennis Courts
- 6 Outdoor Swimming Pool



Theatres, cinemas, galleries and many other cultural institutions form a variety of choices for spending free time.

MORAVIAN THEATRE OLOMOUC

A ninety-year old traditional theatre shows classical and modern works of operas, ballet and drama on the main town stage.

Upper Square 22, tel.: +420 585 223 651, www.moravskedivadlo.cz

MORAVIAN PHILHARMONIC

One of the oldest symphony orchestras in the country, gives concerts and holds important music festivals.

Upper Square 22, tel.: +420 585 206 520, www.mfo.cz

ARCHDIOCESAN MUSEUM

You must visit the carefully rebuilt rooms in Přemyslid Castle that house the carriage of cardinal Troyer, the famous Šternberk Madonna, deposit treasury in the spire of St Barbara and other treasures from the collections of archdiocese. | **Photo 1**

Václavské náměstí 3, tel.: +420 585 514 190, www.olmuart.cz

MUSEUM OF MODERN ART

Art-Nouveau building shows long-term exhibition "An Art Lover's House" and thematic exhibitions of famous artists.

Denisova 47, tel.: +420 585 514 111, www.olmuart.cz

REGIONAL MUSEUM

With its valuable collections, as well as the long-term exposition of geology, zoology, history and chronometry, it stages many exhibitions and educational programmes.

náměstí Republiky 5, tel.: +420 585 515 111, www.vmo.cz

ART CENTRE OF PALACKÝ UNIVERSITY

After a masterly reconstruction, the former Jesuit boarding school holds exhibitions, lectures, concerts, performances and showings.

Univerzitní 3, tel.: +420 585 633 099, www.upol.cz/umelecke-centrum



■ **Wenceslas III** – the king of Bohemia, Poland and Hungary. In August 4, 1306 he was murdered at the age of sixteen as the last male descendant of Přemyslid dynasty in the capitular deanery of the Přemyslid Castle.



■ **Franz Joseph I** – Austrian Emperor who ascended the throne at eighteen in Olomouc. The event took place in the revolutionary year 1848 (December 2) in Trůnní Hall of the Archbishop's Palace.



■ **Joseph Radetzky von Radetz** – Austrian general. One of the best European commanders in the 19th century, from 1829–1831 governed Olomouc imperial fortress. He stayed at Edelmann Palace in the Upper Square.



■ **Gustav Mahler** – composer. He was inspired by Czech folk music. In 1883 he took a conducting post in German theatre (now Moravian Theatre). He lived in the house U Zlaté štiky.



■ **Wolfgang Amadeus Mozart** – composer. In 1767, the eleven-year old musical prodigy stayed in Hauenschild Palace and the capitular deanery in Olomouc, where he composed Symphony No 6 in F Minor.



■ **St John Sarkander** – Catholic Priest, patron of Moravia. He was tortured on the rack in Olomouc prison in 1620, due to the Seal of Confession and died from his injuries. During the Pope's visit in 1995, he was canonized.



NEW PERMANENT EXPOSITIONS IN THE REGIONAL MUSEUM IN OLOMOUC

OLOMOUC – 15 CENTURIES OF THE CITY

The exposition is divided into seven historical themes bringing visitors closer to the complete history of the city, told from the 6th century, through the rough times of the early Middle Ages, all the way to the present day. The immensely rich Olomouc history is shown in the new exposition with a wide selection of artifacts from archaeological finds, historical artistic monuments and literary culture all the way to documentary films of the 20th century. The exposition is filled with an array of modern technology.

NATURE IN THE OLOMOUC REGION

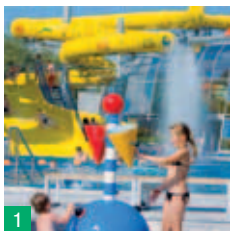
Visitors are familiarised with the region, from the lowlands surrounding Olomouc all the way to the high mountainous terrain of Hrubý Jeseník through the interactive elements of the exposition. Not only can you view pieces of our nature in more detail, but you can also try, touch or listen to them.



■ AQUAPARK OLOMOUC

An all year-round recreation and relaxation complex with wide offer of water attractions. There's the longest indoor toboggan in Moravia, Space Bowl, sauna, whirlpools and wellness zone. Get on tram no 1, 4, 6 or bus no 35. | [Photo 1](#)

Kaňkova, tel.: +420 585 202 085
www.aqua-olomouc.cz



■ SWIMMING STADIUM

Close the centre there is a sports hall with indoor and outdoor pools, toboggan, sauna.

Legionářská 11, tel.: +420 585 427 181
www.olterm.cz/plavecky-bazen



■ OMEGA SPORTS AND HEALTH CENTRE

This modern centre provides a wide range of sports and relaxation activities all at one place.

Legionářská 19, tel.: +420 585 205 700
www.omegasport.cz



■ OLOMOUC PARKS

The centre is surrounded by many parks including exhibition ground Flora, botanical garden, rosarium and one of the largest palm conservatories in the Czech Republic. | [Photo 2](#)

Flora Exhibition Grounds, Wolkerova 17
tel.: +420 585 225 566, www.flora-ol.cz

■ SEMAFOR CENTRE

Traffic education area for the entire family. Bicycle rental with equipment, in-line skates and kick scooters. | [Photo 3](#)

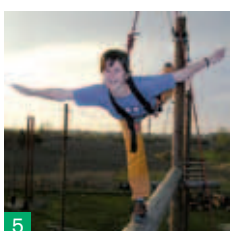
Legionářská 15, tel.: +420 731 122 280
www.olomouc.eu/semafor



■ RAFTING

Unusual sightseeing from rafts, voyages through Litovelské Pomoraví. | [Photo 4](#)

CK PĚŘEJ tours, tř. Svobody 39
tel.: +420 585 313 176, www.perej.cz



■ OLOMOUC BY BICYCLE

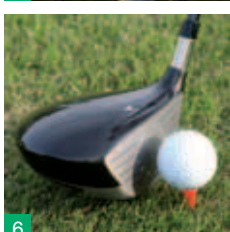
An ideal choice for seeing Olomouc from the saddle, get the bike at cycle hire.

CK PĚŘEJ tours, tř. Svobody 39
tel.: +420 585 313 176, www.perej.cz

■ ROPE CENTRE PROUD

Get the adrenaline going if you love adventure and aren't afraid to look down. | [Photo 5](#)

Na střelnici 48, tel.: +420 605 215 348
www.lanovecentrum.cz



■ GOLF CLUB DOLANY – VĚSKA | 11 km

One master golf course with eighteen holes and one public course (9 holes) offer splendid views of Haná landscape. | [Photo 6](#)

Dolany-Věska, tel.: +420 585 397 278
www.golf-olomouc.cz

■ ZOO OLOMOUC | 9 km

The main crowd-puller of this popular zoo is the shark's aquarium and free run of monkeys. Zoo is set in pleasant atmosphere of wood nearby Svätý Kopeček hill. Accessible by bus no 11 from Railway St. | [Photo 7](#)

Darwinova 29, Svätý Kopeček
tel.: +420 585 151 600, www.zoo-olomouc.cz



■ VETERAN ARENA

Largest museum of historic cars in the country, a hundred vehicles and other showpieces. | [Photo 8](#)

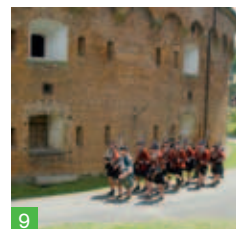
Sladovní ul., Olomouc, tel.: +420 585 157 438
www.veteran-arena.cz



■ FORT XVII KŘELOV | 7 km

Newly renovated fort is part of a unique ring of 22 small outpost forts built in the mid 19th century to reinforce the defence of the Olomouc fortress. | [Photo 9](#)

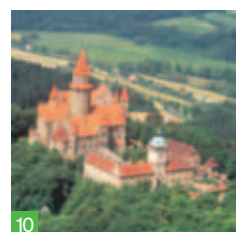
Na Fortu 1, Křelov, tel.: +420 603 444 010
www.forty.cz



■ OPEN-AIR MUSEUM PŘÍKAZY | 12 km

Exposition of original folk architecture shows the life and crafts of village in Haná region.

Příkazy 54, tel.: +420 585 967 310
www.hanackeskanzen.cz



■ BOUZOV CASTLE | 35 km

One of the most visited and picturesque castles in the country. Featured in several films. A number of routes. | [Photo 10](#)

Bouzov, tel.: +420 585 346 202
www.hrad-bouzov.cz

■ LITOVELSKÉ POMORAVÍ

Protected landscape area with natural floodplain forest in the river Morava delta is sought by hikers and cyclists. Start at gateway Sluňákov, the low-energy house with information centre. | [Photo 11](#)

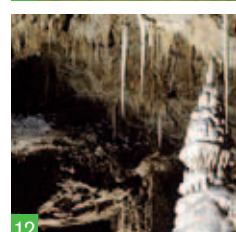
Horka nad Moravou, tel.: +420 585 154 711
www.slunakov.cz



■ JAVOŘIČKO CAVES | 33 km

Accessible by two routes, the richest cave of stalactites and stalagmites in the country. | [Photo 12](#)

Luká-Javoříčko, tel.: +420 585 345 451
www.caves.cz/jeskyne/javoricske-jeskyne/



■ MUSEUM OF TVARŮŽKY | 30 km

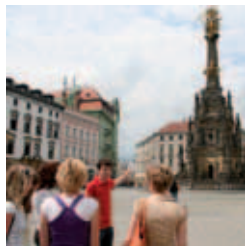
The museum with smelly-cheese shop documents the tradition and present production of the original local speciality.

Palackého 4, Loštice, tel.: +420 583 401 211
www.tvaryzky.cz

■ **GUIDED TOUR**

One hour tour "Olomouc In a Nut-shell" to monuments of Upper Square with climbing the 75-metre town hall tower. Open daily from June to September.

Adult 50 CZK, Child (aged 6–15) and ISIC holder 25 CZK, Child (aged 0–6) and Olomouc region Card holder admission free



■ **CLIMBING THE TOWN HALL TOWER**

Guided climbing to gallery of a 75-metre high town hall tower enable you to lookout all Olomouc's attractions and monuments in full view. There is an opportunity to look into a small room dwelled by tower keeper.

Adult 15 CZK, Child (aged 6–15) 10 CZK, Olomouc region Card holder admission free



■ **GUIDED TOUR OF CHURCHES**

All the important Olomouc's churches and chapels are open to the public daily from 9am to 5pm during tourist season. Guided service is provided Tue - Sat.



PERMANENT EXPOSITIONS AT TOWN HALL

The exposition is devoted to **the history of the Town Hall** of Olomouc, all its building renovations as well as the Chapel of St. Jerome, and is located directly in the Town Hall building on the 1st floor of the east wing.

In the exposition, **the tale of the Astronomical Clock of Olomouc** is captured, its creators and clock masters, one floor above. One can also find a display of all its historical appearances all the way to the present.

A brand new permanent exposition "**Olomouc Changing Throughout the Centuries**" on the first floor of the Town Hall brings the city's history closer through paintings, informative panels and facsimiles of significant historical documents.

The expositions are accessible free of charge during the office hours or within guided tours of Olomouc In a Nutshell.



■ **FALLOUT SHELTER OF THE CIVIL PROTECTION**

A guided tour of a fallout shelter in Bezruč Park, which was constructed as a headquarters of civil defence in the 1950's. Tour is available every Thu and Sat at 10am, 1pm and 4pm between June and September.

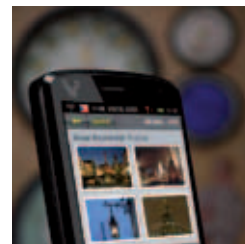
Adult 20 CZK, Child (aged 0–15) admission free



■ **MULTIMEDIA GUIDE**

Olomouc's information navigation OLINA combines the maps with GPS navigation and consists of text, photos and video on Olomouc's monuments. This guide offers you to choose from thematic tours, including a new tour Tracing St John Sarkander.

Free of charge, deposit 500 CZK returned at the end of the tour



■ **OLOMOUC AUDIOGUIDE**

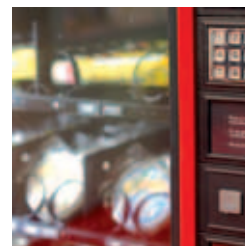
You can choose your own tour on attractions with audio guide – especially suitable for individual visitors of Olomouc. Audio guide is available in Czech, English, German, French and Italian.

Price: 100 CZK, Olomouc region Card holder admission free, Deposit: 300 CZK returned at the end of the tour



■ **VENDING MACHINE WITH TVARŮŽKY CHEESE**

There are only two vending machines with Tvarůžky Cheese in the world. One of them is right in IC Olomouc. It offers you the classic shapes of wreath and bar, cream cheese and various spread. This kind of cheese gets you not only by its taste but mainly for its typical smell.



■ **OLOMOUC REGION CARD**

This tourist discount card is valid within the whole region. Public transport, museums, castles and chateaux are free of charge. Many restaurants and hotels offer discount rates as well.

48-hour card

Adult 180 CZK, Child (aged 0–15) 90 CZK

5-day card

Adult 360 CZK, Child (aged 0–15) 180 CZK



Olomouc

...stay overnight



OLOMOUC INFORMATION CENTRE

Upper Square – Town Hall

tel: +420 585 513 385, +420 585 513 392

e-mail: infocentrum@olomouc.eu

www.facebook.com/informacni.centrum.olomouc

<http://tourism.olomouc.eu>